

The logo for IDEA45 features a stylized green lightning bolt and a blue line with a ground symbol above the text. The word "IDEA" is in blue and "45" is in green.

IDEA45



MANUAL OPERATING MECHANISM

HM

MECHANICAL PARTS

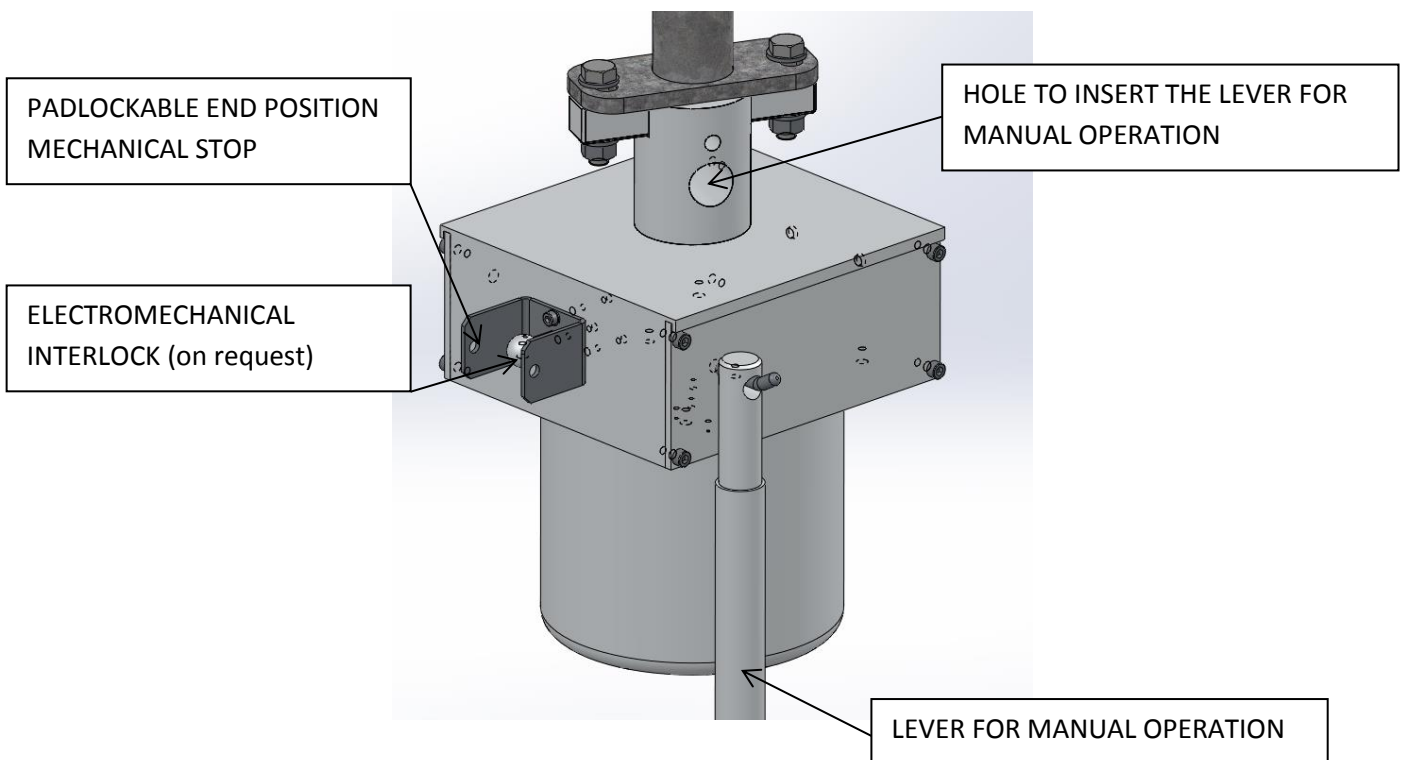
The manual operating mechanism is made by a directly connection from the vertical shaft to the manual lever. The correct angle rotation is ensured by a mechanical stop inside the mechanism. The external parts are in aluminum alloy, this alloy AlMgSi0,5 well know as 6060, provides one excellent corrosion resistance ensured a zero maintenance on life and a IP55 protection.

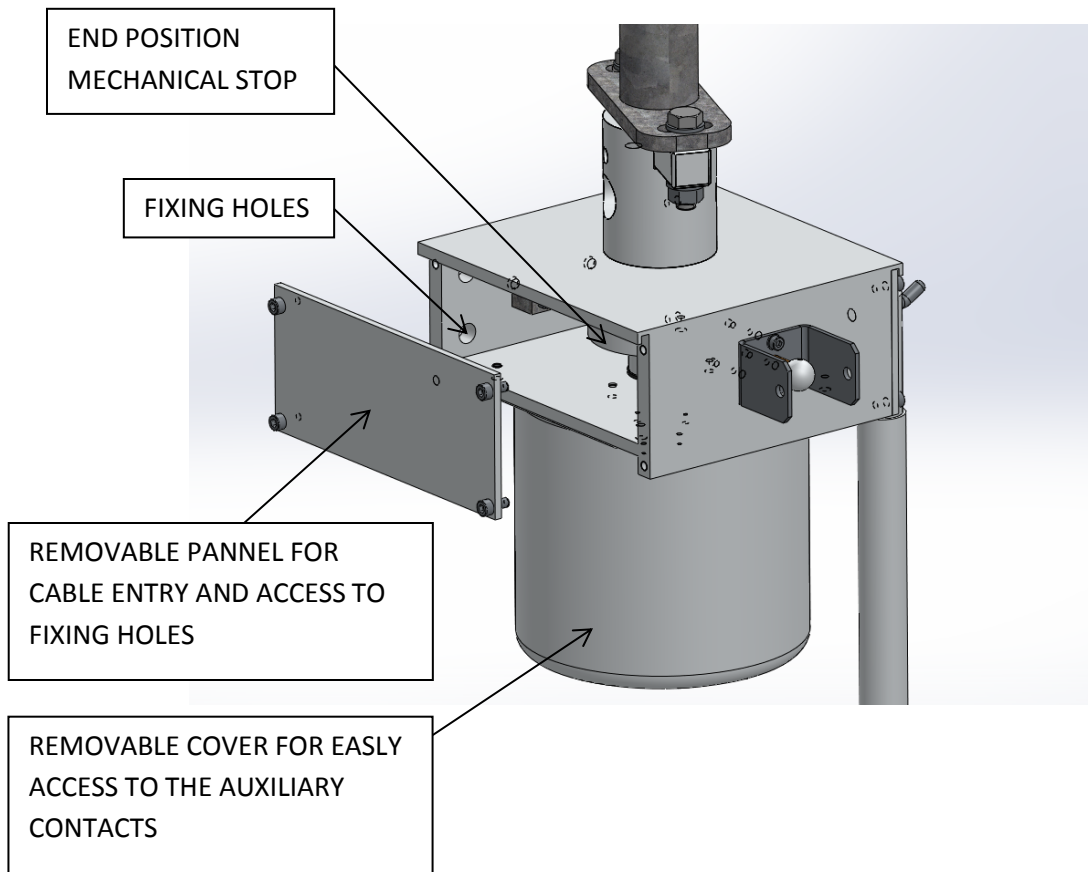
ELECTRICAL PARTS

All the electrical parts (auxiliary contacts device, protection for external consent to operate etc.) assembled on the manual operating mechanism are provided by components from industry leaders.

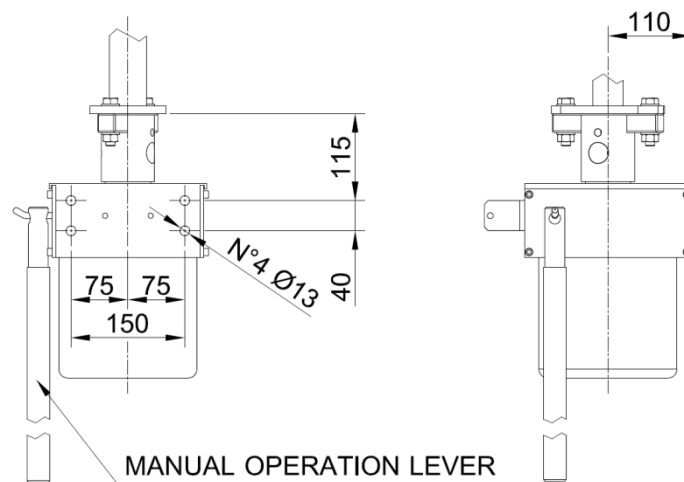
CUSTOMIZATION

Safety operation can be ensured with an electromechanical interlocking who does not allow to operate the disconnecter without the substation protection system consent.





MAIN DIMENSION AND FIXING POINT



CONTACT US

IDEA45 srl
 Via Torino 1/L,
 35035 Mestrino (Pd) Italy
 Phone: +39 049 856 1274
 Fax: +39 049 872 8263
www.idea45srl.com
info@idea45srl.com