



BROCHURE N° CAT.DS2A.E.16.B



DS2A
CENTRE BREAK DISCONNECTOR
72,5 – 550Kv

RELIABILITY AND VIRTUALLY NO MAINTENANCE

Idea DS2A disconnecter is designed with the most advanced techniques by a team of engineers with over 40 years of experience in the field of high and very high voltage disconnecter.

The DS2A disconnecter is designed to ensure the best performance and maximum reliability in the wide range of environmental conditions such as high ambient temperature, ice, wind, earthquake, industrial and marine polluted area.

Thanks to the advanced current path design and material, with high quality silver plated copper contacts, stainless steel contact springs, strong rotary pedestal on sealed ball bearing for low friction and smooth operation, make the disconnecter virtually maintenance free.

Standards — The DS2A disconnecter is designed to fully comply with IEC 62271-102 and IEC 62271-1 standards - other international standard such as ANSI or customers special specification can be customized upon request.

The strong rotary insulator support designed for DS2A comply with IEC or ANSI standards with superior mechanical characteristics at high static pulling loads . Top quality ceramic or composite insulators can be supplied upon request.

Modularity — the DS2A disconnecter is designed with maximum modularity providing the possibility at any time ,even after installation on site to:

- Upgrade of rated nominal current
- Mounting of one or two earthing switch
- Installation of horizontal pad on the standard terminal stud
- Replacement of manual to motorized operating mechanism
- Assembly of the device for the bus transfer current switching



Interlocking facilities between disconnecter and earthing switch and on operating mechanism on both open and closed position.

Customization — customized solution including parallel, in-line, diagonal, vertical, upside down and large phase distance available upon request.

Installation at site — the pre-assembled & adjusted delivery of live parts, bases and linkage allow a quick and easy set-up at site. Simple and comprehensive instruction manual facilitate the erection and final adjustments.

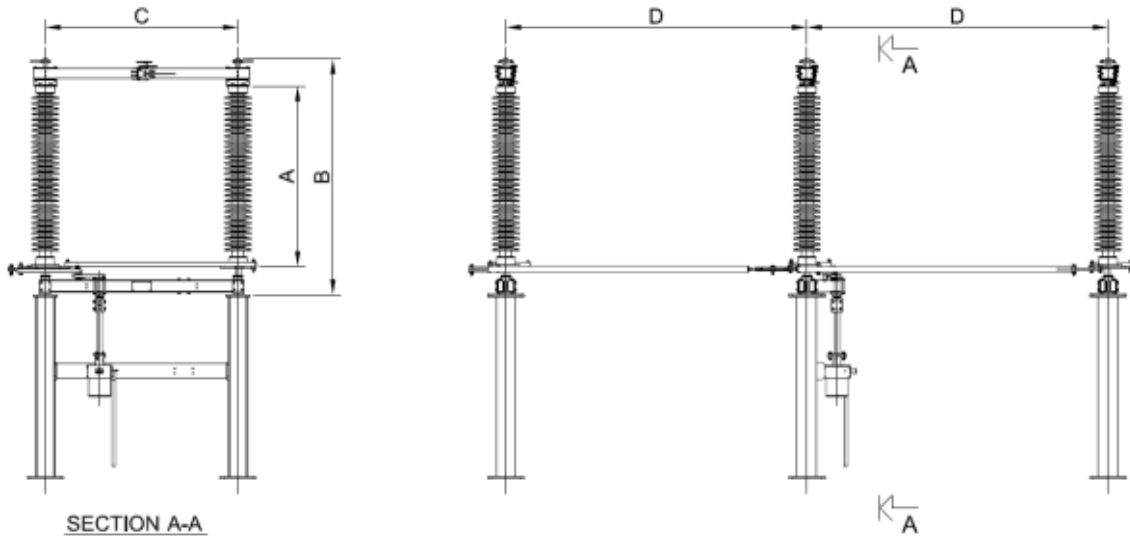


CENTER BREAK DISCONNECTOR DS2A



ADVANCED DESIGN FOR CUSTOMER SATISFACTION

MAIN DIMENSION



Main dimension – DS2A				
Rated Voltage (kV)	Outline Dimension (mm)			
	A	B	C	D
72.5	770	1160	900	Depend on the substation layout
123	1220	1610	1400	
145	1500	1910	1600	
170	1700	2110	1900	
245	2300	2780	2600	
300	2650	3130	2800	
362	2900	3470	3200	
420	3350	4000	3900	
550	4000	4750	4500	



TECHNICAL DATA

Technical data – DS2A											
Rated voltage (Ur)	kV	72.5	123	145	170	245	300	362	420	550	
Rated frequency (fr)	Hz	50/60	50/60	50/60	50/60	50/60	50/60	50/60	50/60	50/60	
Rated nominal current (Ir) Up To	A	4000	4000	4000	4000	4000	4000	4000	4000	4000	
Rated short-withstand current, rated duration of short circuit (Ik, tk) Up To	kA/s	63/3	63/3	63/3	63/3	63/3	63/3	63/3	63/3	63/3	
Rated peak withstand current (Ip) Up To	kAp	164	164	164	164	164	164	164	164	164	
Rated power frequency withstand voltage for 1 minute											
To earth and between poles	kV	140	230	275	325	460	395	450	520	620	
Across the insulating distance	kV	160	265	315	375	530	435	520	610	800	
Rated lightning impulse withstand voltage (1.2/50 μs)											
To earth and between poles	kVp	325	550	650	750	1050	1050	1175	1425	1550	
Across the isolating distance	kVp	375	630	750	860	1200	1050 (+170)	1175 (+205)	1425 (+240)	1550 (+315)	
Rated switching impulse withstand voltage											
To earth	kVp	-	-	-	-	-	850	950	1050	1175	
Between poles	kVp	-	-	-	-	-	1275	1425	1575	1760	
Across the isolating distance	kVp	-	-	-	-	-	700 (+245)	800 (+295)	900 (+345)	900 (+450)	

OPERATING MECHANISM

The three phase disconnect and earthing switch can be supplied by manual or motor operated mechanism, for each individual pole or one operating mechanism for three poles. The operation is guaranteed via a safe linkage system.

MOTOR OPERATING MECHANISM TYPE MM

MM mechanism consist of corrosion-free, sand and water proof IP55 cabinet containing; DC or AC motor, local remote selector switch, closing/opening push button, motor protection, auxiliary contacts device, easy assembly terminal board, hand crank for manual operation, mechanical and electrical interlocking facilities for safe operation. A robust lubricated for life, two stage irreversible reduction gear system provide smooth and fast operation.

MANUAL OPERATING MECHANISM TYPE HM

HM mechanism consist of a robust corrosion-free, sand and water proof IP55 mechanism containing; interlock facilities for safe operation, and the lever for manual closing/opening operation. The auxiliary contact assembly on the mechanism can be easily inspected and wired by removing the sealing protection.



EARTHING SWITCH

One or two earthing switch can be assembled in any moment on request on the DS2A base. According to the requirements and substation layout, the earthing switch can be assembled parallel to the DS2A bases internally, eternally or perpendicular.

Optionally, the earthing switch can be arranged for switching induced currents according IEC 62271-102 class A or B

Two type of earthing switch are available .

Single motion type up to 40 kA 3s

Double motion type up to 63 kA 3s

CONTACT US

IDEA45 srl

Via Torino 1/L,

35035 Mestrino (Pd) Italy

Phone: +39 049 856 1274

Fax: +39 049 872 8263

www.idea45srl.com

info@idea45srl.com